

Can a Model GV DuraCap or High Wind Cap be used on Model BV?

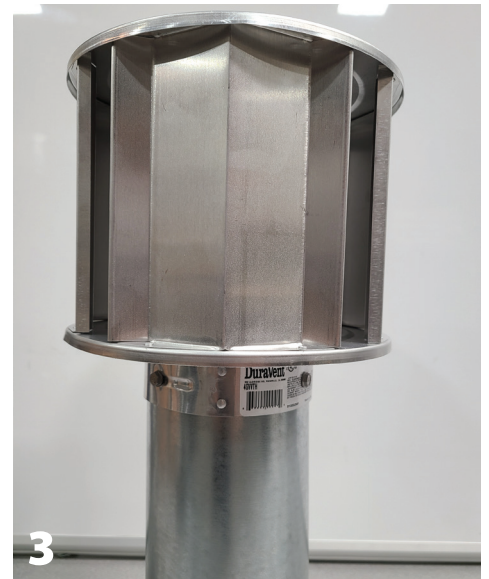
*The short answer is yes on sizes 3" to 8".*

To connect a Model GV cap to a Model BV pipe, follow the steps outlined below –

Step 1: To secure one of the Model GV terminations simply insert the Model GV cap on top of the Model BV pipe. You do not need to align tabs, simply place the selected cap on top of the pipe and push down.

Step 2: Press the cap down until it reaches the internal stop of the cap. Engagement is about 2 inches.

Step 3: Secure with a minimum of 3 - #8 x 1/4" stainless steel sheet metal screws, evenly spaced 120 degrees apart. Screws are not included.



For current pricing and availability, please call customer service at (800) 835-4429.

Information published in all DuraVent bulletins is current at time of publication and is subject to change without notice.